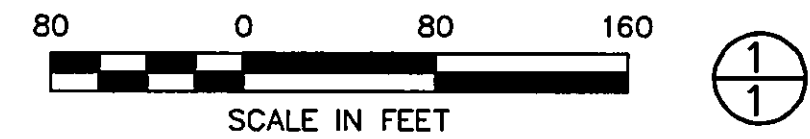


CROSS CREEK VILLAGE CONDOMINIUM

PHASE 5 - PARCEL 2

CITY OF WILLOUGHBY
LAKE COUNTY, OHIO

SITUATED IN THE CITY OF WILLOUGHBY, COUNTY OF LAKE AND STATE OF OHIO AND KNOWN AS BEING PART OF ORIGINAL WILLOUGHBY TOWNSHIP LOT NOS. 1 & 7 IN THE DOUGLAS TRACT.

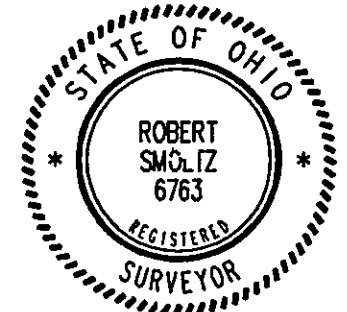


VOL.54-12

PREPARED BY
STEPHEN HOVANCSEK & ASSOC., INC.
CONSULTING ENGINEER & PLANNERS
TWO MERIT DRIVE, RICHMOND HTS., OHIO PH. 216-731-6255

THE UNDERSIGNED HEREBY CERTIFIES THAT THE DRAWING HEREON IS A CORRECT REPRESENTATION OF A TRUE AND ACCURATE SURVEY MADE BY THE UNDERSIGNED AS OF THE DATE SHOWN HEREON; THE PERIMETER OF THE SURVEY WAS ESTABLISHED BY ACCURATED FIELD MEASUREMENTS; AND MONUMENTS WERE FOUND OR SET AS INDICATED HEREON.

Robert J. Smoltz
ROBERT J. SMOLTZ
OHIO REG. SURVEYOR NO. 6763
JANUARY 16, 2007



CURVE	RADIUS	LENGTH	CHORD	BEARING	DELTA
C1	412.00	15.53	15.53	N 1°-29'-55" E	2°-09'-37"
C2	20.00	10.21	10.10	N 15°-02'-52" E	29°-15'-32"

LINE	LENGTH	BEARING
L1	57.75	N 0°-25'-06" E
L2	11.72	N 29°-40'-38" E
L3	33.72	N 70°-35'-42" E

SETBACK NOTE:
THE FRONT SETBACK, SHOWN AS 20' S/B IN THE AREA OF THE COMPLETED UNITS, DENOTES THE 20' SETBACK DISTANCE FROM THE BACK OF THE EXISTING ROADWAY CURB TO THE FRONT LIMIT OF THE UNIT.

OFFSETS FROM A BUILDING CORNER TO PROPERTY LINES, PHASE LINES OR ADJACENT BUILDINGS ARE SHOWN WITH DIMENSION ARROWS OR AS INDICATED BELOW.

FOR Amend. to Declaration
SEE OFFICIAL RECORDS FILE NO. 2007R002758
FRANK A. SUPONCIC, RECORDER
S. Collins DEPUTY

2007R002758 DATE 1-24-2007

RECEIVED FOR RECORD

1/24/2007

AT 12:57 AM/PM

RECORDERS FEE 54.00

Vol. 54 Page 12

FRANK A. SUPONCIC
Lake County Recorder

N7°10'15"E 255.93'

N7°10'15"E 170.84'

LAKE EDGE TRAIL (PRIVATE ROAD)

20' SETBACK

10' PRIVATE UTILITY EASEMENT

24' ROADWAY B/C

10' PRIVATE UTILITY EASEMENT

WILLOBEE-ON-THE-LAKE ALLOTMENT NO. 3 VOL. E PG. 12 (LAKE COUNTY RECORDS)

Plat Approved For Recording

Lake County Engineer

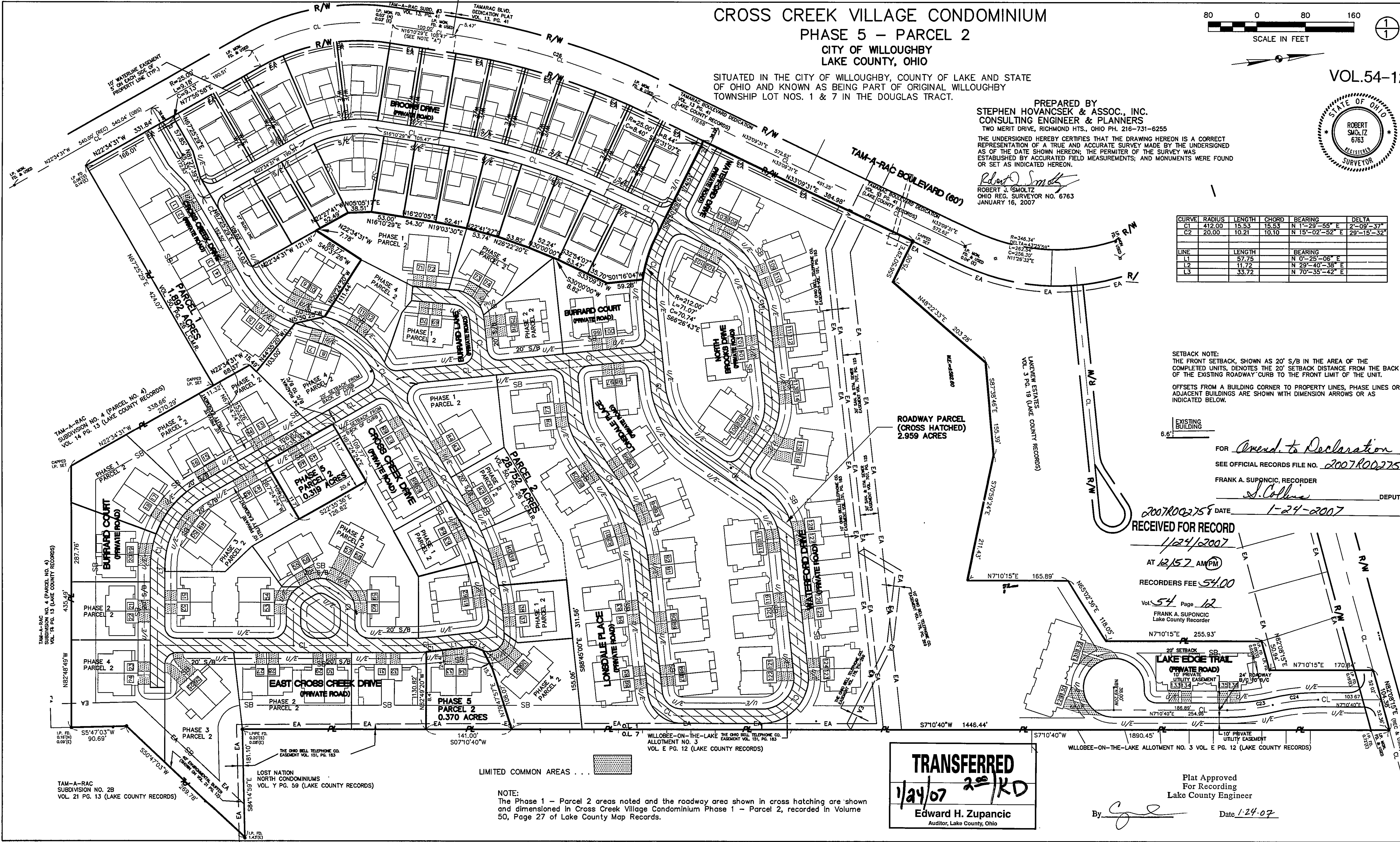
By *[Signature]*

Date 1-24-07

TRANSFERRED
1/24/07 20/KD
Edward H. Zupancic
Auditor, Lake County, Ohio

LIMITED COMMON AREAS . . .

NOTE:
The Phase 1 - Parcel 2 areas noted and the roadway area shown in cross hatching are shown and dimensioned in Cross Creek Village Condominium Phase 1 - Parcel 2, recorded in Volume 50, Page 27 of Lake County Map Records.



TAM-A-RAC SUBDIVISION NO. 2B VOL. 21 PG. 13 (LAKE COUNTY RECORDS)

LOST NATION NORTH CONDOMINIUMS VOL. Y PG. 59 (LAKE COUNTY RECORDS)

WILLOBEE-ON-THE-LAKE THE OHIO BELL TELEPHONE CO. ALLOTMENT NO. 3 VOL. E PG. 12 (LAKE COUNTY RECORDS)

WILLOBEE-ON-THE-LAKE ALLOTMENT NO. 3 VOL. E PG. 12 (LAKE COUNTY RECORDS)