

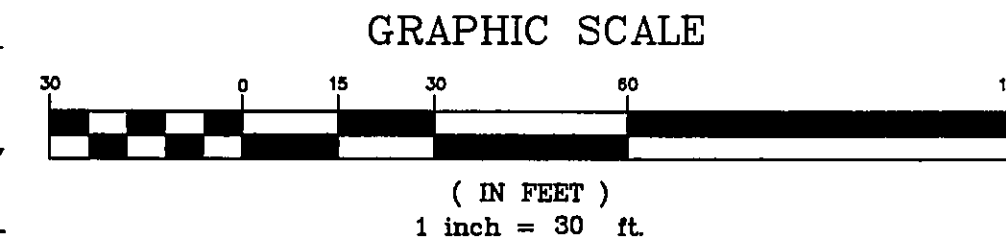
MARVIN & HARRY FRIEDMAN  
VOL. 65 - PG. 868  
27B-55-4

LAKE FOREST VILLAGE

# STONEBRIDGE CONDOMINIUMS

SITUATED IN THE CITY OF WILLOUGHY, COUNTY OF LAKE, AND STATE OF OHIO  
AND KNOWN AS BEING PART OF LOT No. 3 IN THE DOUGLAS TRACT  
PHASE 8

FOR AMEND. TO CONDO. DEC.  
SEE OFFICIAL RECORDS FILE NO. 2007R003411  
FRANK A. SUPONCIC, RECORDER  
M.P. Hayes DEPUTY  
DATE 1/30/2007



WOODBRIIDGE CONDOMINIUMS  
VOL. Z - PG 23

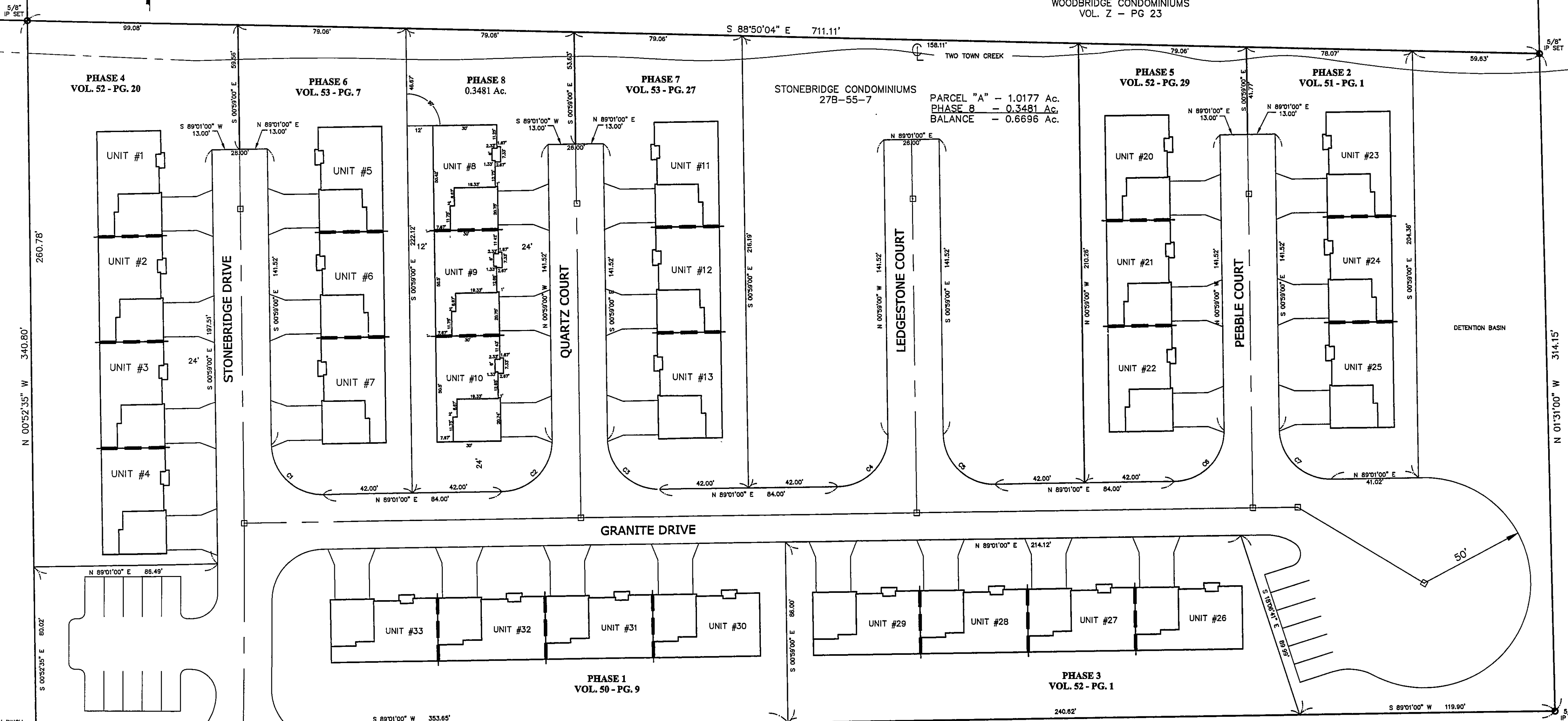
**2007R003410**  
**RECEIVED FOR RECORD**  
1/30/2007

AT 12:20 AM PM  
RECORDERS FEE 54.00  
Vol. 54 Page 13  
FRANK A. SUPONCIC  
Lake County Recorder

TWO TOWN  
CREEK APARTMENTS

LOUIS J. MARINO TRUSTEE  
#970009731  
27B-55-6

**TRANSFERRED**  
1/30/07 \$1.50/RD  
Edward H. Zupancic  
Auditor, Lake County, Ohio



IRON PINCH  
PIPE FND  
INGRESS & EGRESS EASEMENT

FRIEDMAN PROPERTIES LIMITED  
VOL. 1153 - PG. 0150  
27B-55-13

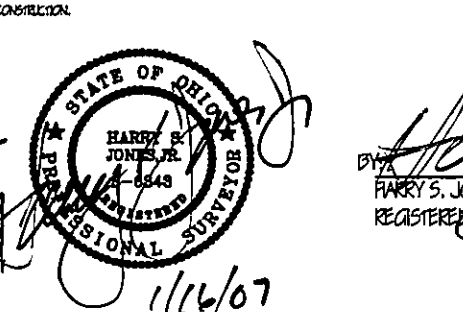
FOX RUN  
CONDOMINIUMS

CURVE TABLE						
CURVE	LENGTH	RADIUS	TANGENT	CHORD	BEARING	DELTA
C1	37.70	24.00	24.00	33.94	S45°59'00"E	90°00'00"
C2	37.70	24.00	24.00	33.94	N44°01'00"E	90°00'00"
C3	37.70	24.00	24.00	33.94	S45°59'00"E	90°00'00"
C4	37.70	24.00	24.00	33.94	N44°01'00"E	90°00'00"
C5	37.70	24.00	24.00	33.94	S45°59'00"E	90°00'00"
C6	37.70	24.00	24.00	33.94	N44°01'00"E	90°00'00"
C7	37.70	24.00	24.00	33.94	S45°59'00"E	90°00'00"

**bj** BABCOCK, JONES AND ASSOCIATES, INC  
CIVIL ENGINEERS - SURVEYORS - LAND PLANNERS  
1924 MENTOR AVE - PAINESVILLE - OHIO 44077  
PHONE 1-440-357-1811 FAX 1-440-357-8173

Flat Approved  
For Recording  
Lake County Engineer

By M.P. Hayes Date 1/30/07



**SURVEYOR'S CERTIFICATION:**  
I HEREBY CERTIFY THAT THE RECORD OF THE OWNER HAS PLANNED STONEBRIDGE CONDOMINIUMS, AS SHOWN HEREON AND CONTAINING 9.2662 ACRES OF LAND,  
IN ALL POINTS TO BE ACCURATE, AND THAT THE SURVEY WAS MADE BY ME OR BY A LICENSED SURVEYOR UNDER MY CLOSE PERSONAL SUPERVISION AND THAT I AM  
AN ASSUMED ADEQUATE AND ARE FOR THE SOLE PURPOSE OF RECORDING THE BELIEVED ACCURATE VALUE THEREOF, ALL OF WHICH CERTIFY TO BE CORRECT TO THE BEST  
OF MY KNOWLEDGE AND BELIEF.  
THIS IS TO CERTIFY THAT THIS PLAN REPRESENTS A SURVEY IN WHICH THE BOUNDARY OF THE EXISTING BOUNDARIES WERE COMPARED FROM TRIP MEASUREMENTS WAS ACCURATE  
TO WITHIN A MAXIMUM PRECISION OF 1/10000 BEFORE MAKING THE SURVEY, AND THAT ALL THE REQUIRED MEASUREMENTS ARE CORRECTLY SHOWN HEREON AND THAT THESE  
MEASUREMENTS WERE NECESSARY FOR CONSTRUCTION OF IMPROVEMENTS AS IN PLACE ON THE SITE WITH AN ALLOWABLE SURVEY TOLERANCE TO BE MAINTAINED UPON  
COMPLETION OF CONSTRUCTION.