

# ORCHARD SPRINGS-PHASE No. 1

SALMINEN, SCOTT M. & CHRISTINA L.  
08-A-012-0-00-051-0  
2004R023356

**NOTES:**

FRONT SETBACK 30'  
SIDE YARDS 10'  
REAR YARD 30'

SUBLOT 1 SHALL FACE ALEXA DRIVE WHILE SUBLOTS 15 & 22 SHALL FACE ORCHARD ROAD

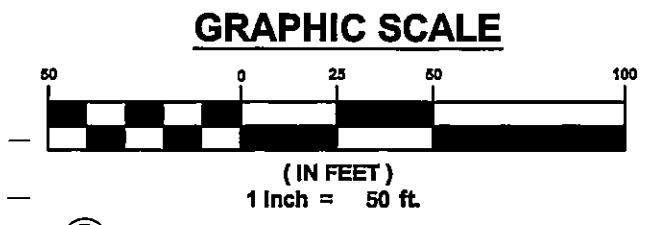
LINE	BEARING	DISTANCE	LINE	BEARING	DISTANCE
L1	N 82°44'53" E	99.07'	L13	N 81°13'00" E	38.58'
L2	S 53°36'02" E	43.62'	L14	N 76°10'39" W	33.04'
L3	S 00°32'08" E	25.02'	L15	S 45°30'24" E	30.69'
L4	N 53°36'02" W	36.59'	L16	S 29°11'58" E	8.86'
L5	N 82°44'53" E	107.08'	L17	N 89°01'30" E	14.50'
L6	N 05°34'44" W	32.30'	L18	S 56°00'04" E	18.31'
L7	N 88°52'15" E	10.03'	L19	N 25°05'11" W	18.64'
L8	N 37°40'01" E	23.87'	L20	S 74°13'32" E	38.20'
L9	N 42°01'52" E	71.11'	L21	S 75°13'12" E	25.14'
L10	S 86°02'17" E	19.28'	L22	S 67°26'49" E	23.21'
L11	S 55°07'17" E	19.00'	L23	N 43°20'19" E	14.92'
L12	N 15°28'26" W	33.76'	L24	N 44°49'41" W	26.95'
			L25	S 71°02'16" E	16.70'

LINE	BEARING	DISTANCE
L26	N 51°47'19" E	17.75'
L27	N 73°54'21" E	12.46'
L28	S 20°38'20" E	12.47'
L29	S 03°57'43" W	25.33'
L30	S 06°49'46" W	17.94'
L31	N 00°32'08" W	9.14'
L32	N 88°52'15" E	15.00'
L33	S 0°07'45" E	99.63'
L34	S 46°07'45" E	21.21'
L35	S 88°52'15" W	50.00'
L36	S 0°07'45" W	74.99'

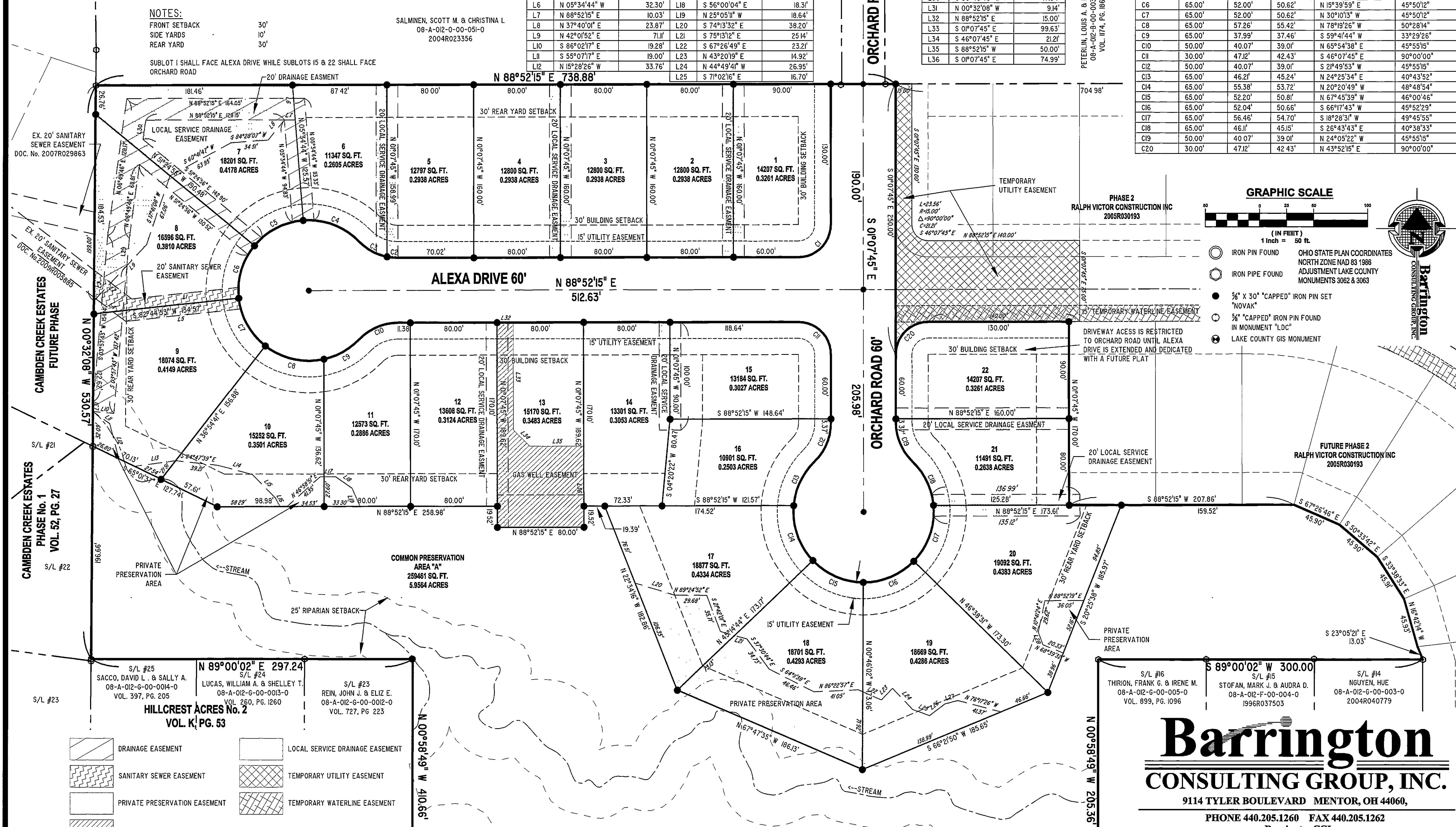
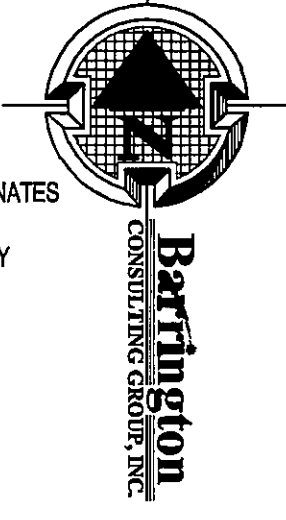
CURVE	RADIUS	LENGTH	CHORD	BEARING	DELTA ANGLE
C1	30.00'	47.12'	42.43'	S 43°52'15" W	90°00'00"
C2	50.00'	10.05'	10.03'	N 85°22'12" W	11°31'06"
C3	50.00'	30.02'	29.57'	N 62°24'34" W	34°24'09"
C4	65.00'	57.14'	55.32'	S 70°23'37" E	50°22'14"
C5	65.00'	52.00'	50.82'	N 6°30'10" E	45°50'12"
C6	65.00'	52.00'	50.62'	N 15°39'59" E	45°50'12"
C7	65.00'	52.00'	50.62'	N 30°10'13" W	45°50'12"
C8	65.00'	57.26'	55.42'	N 78°19'26" W	50°28'14"
C9	65.00'	37.99'	37.46'	S 59°41'44" W	33°29'26"
C10	50.00'	40.07'	39.01'	N 65°54'38" E	45°55'15"
C11	30.00'	47.12'	42.43'	S 46°07'45" E	90°00'00"
C12	50.00'	40.07'	39.01'	S 2°49'53" W	45°55'15"
C13	65.00'	46.21'	45.24'	N 24°25'34" E	40°43'52"
C14	65.00'	55.38'	53.72'	N 20°20'49" W	48°48'54"
C15	65.00'	52.20'	50.81'	N 7°45'39" W	46°00'46"
C16	65.00'	52.04'	50.66'	S 66°17'43" W	45°52'29"
C17	65.00'	56.46'	54.70'	S 18°28'31" W	49°45'55"
C18	65.00'	46.11'	45.15'	S 26°43'43" E	40°38'33"
C19	50.00'	40.07'	39.01'	N 24°05'22" W	45°55'15"
C20	30.00'	47.12'	42.43'	N 43°52'15" E	90°00'00"

PETERLIN, LOUIS A. & LINDA  
08-A-012-0-00-003-0  
VOL. 1174, PG. 186

PHASE 2  
RALPH VICTOR CONSTRUCTION INC  
2005R030193



- IRON PIN FOUND
  - IRON PIPE FOUND
  - 5/8" X 30" "CAPPED" IRON PIN SET "NOVAK"
  - 5/8" "CAPPED" IRON PIN FOUND IN MONUMENT "LDC"
  - ⊙ LAKE COUNTY GIS MONUMENT
- OHIO STATE PLAN COORDINATES  
NORTH ZONE NAD 83 1986  
ADJUSTMENTS LAKE COUNTY  
MONUMENTS 3062 & 3063



- DRAINAGE EASEMENT
- SANITARY SEWER EASEMENT
- PRIVATE PRESERVATION EASEMENT
- GAS WELL EASEMENT
- LOCAL SERVICE DRAINAGE EASEMENT
- TEMPORARY UTILITY EASEMENT
- TEMPORARY WATERLINE EASEMENT

APRIL 19, 2010

## Barrington

### CONSULTING GROUP, INC.

9114 TYLER BOULEVARD MENTOR, OH 44060,  
PHONE 440.205.1260 FAX 440.205.1262  
www.BarringtonCGL.com